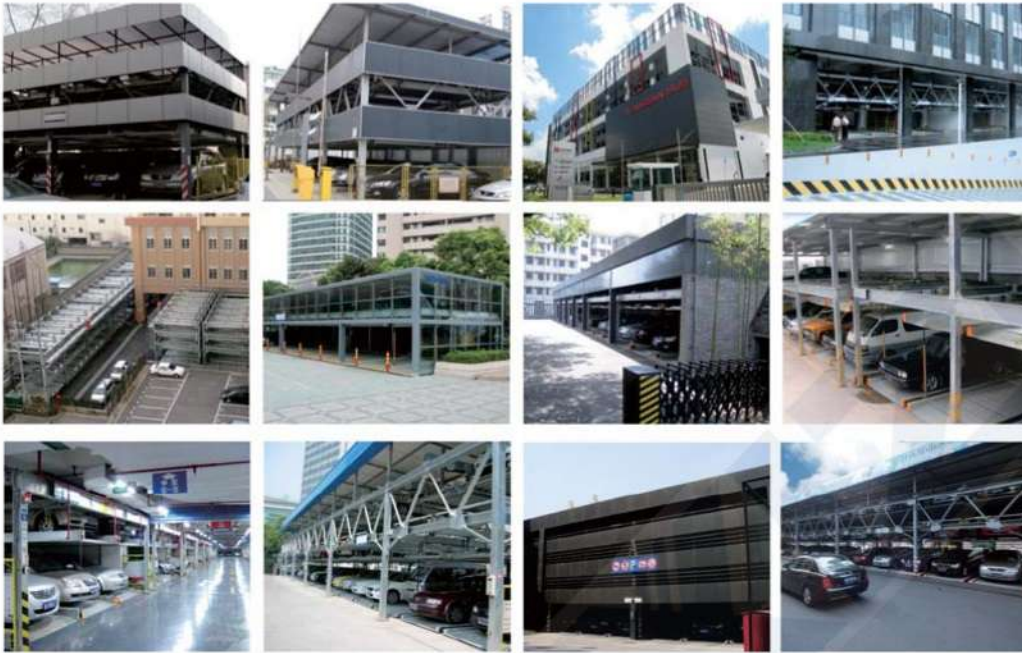
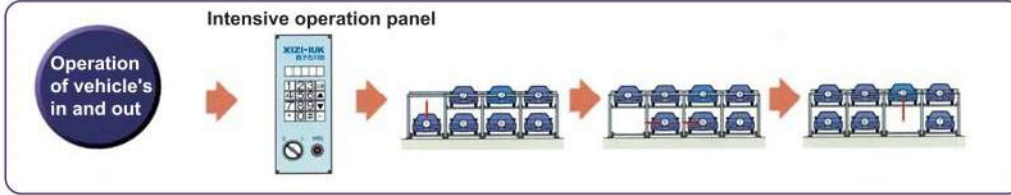
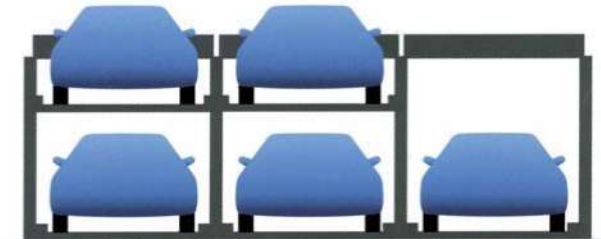


Diagrammatic drawing of vehicle's in and out



Parking Systems

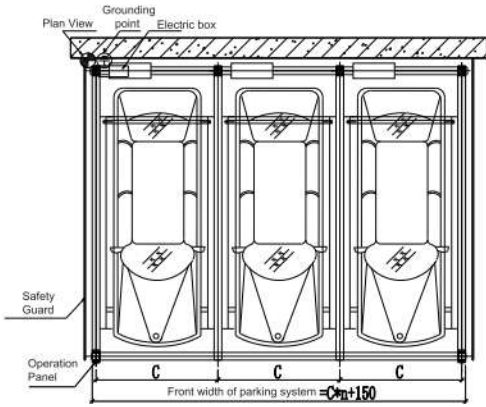


LIFT-SLIDING PSH

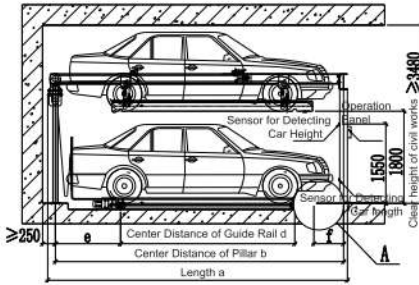
LIFT-SLIDING MECHANICAL PARKING SYSTEM

- LOW COST\LOW NOISE
- EASY TO INSTALL\FLEXIBLE LAYOUT
- SIMPLE STRUCTURE\CONVENIENT FOR PARKING AND RETRIEVING CARS

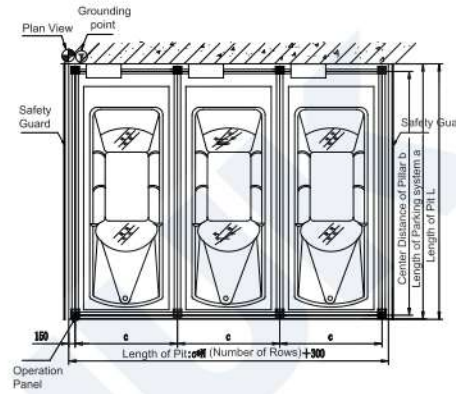
Plan View



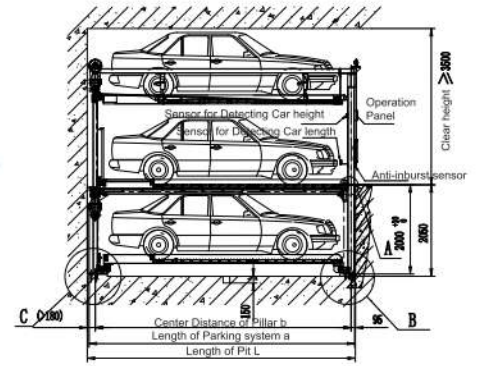
Side Elevation



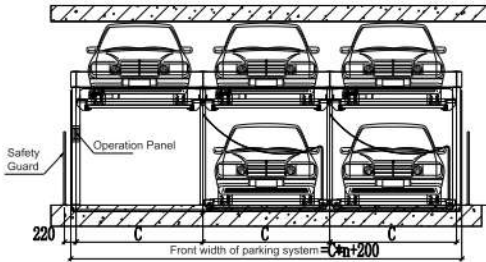
Plan View



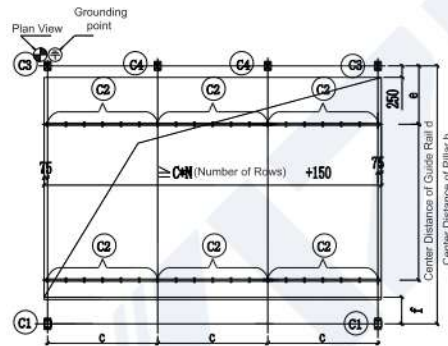
Side Elevation



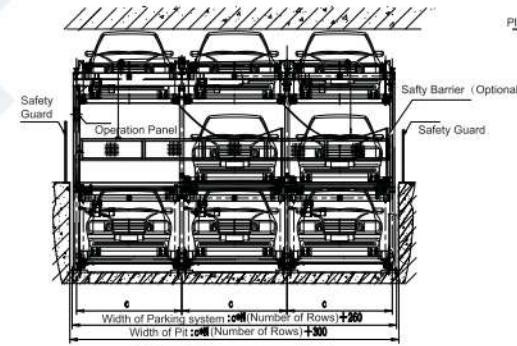
Elevation



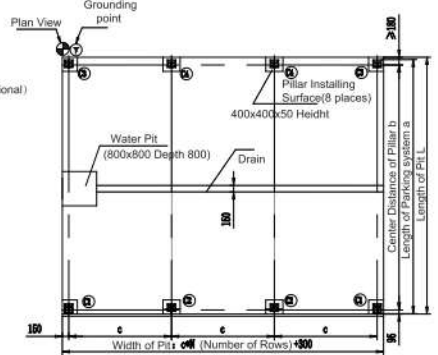
Architectural drawings



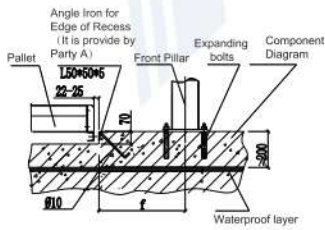
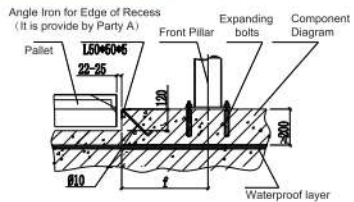
Elevation



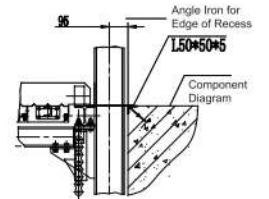
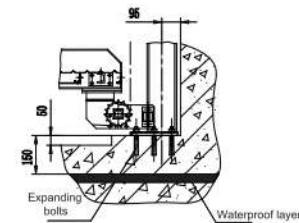
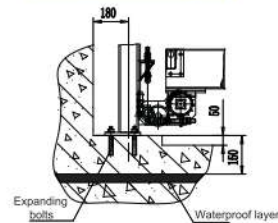
Architectural drawings



Component Diagram



Component Diagram

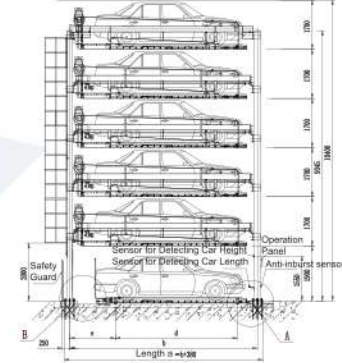
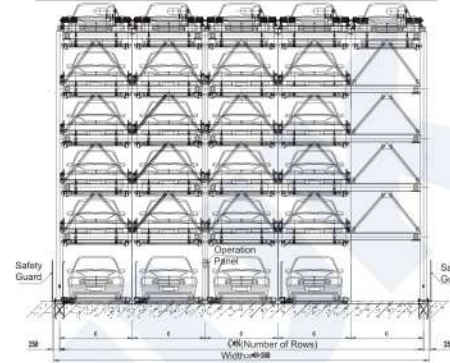
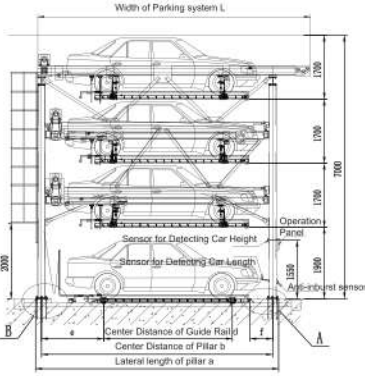
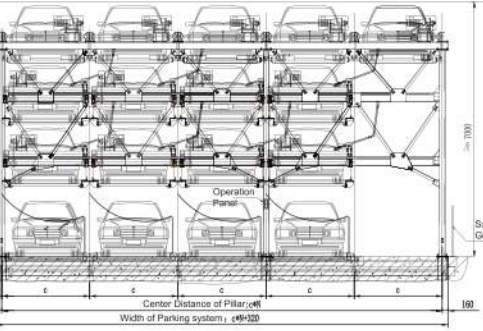


Elevation

Side Elevation

Elevation

Side Elevation

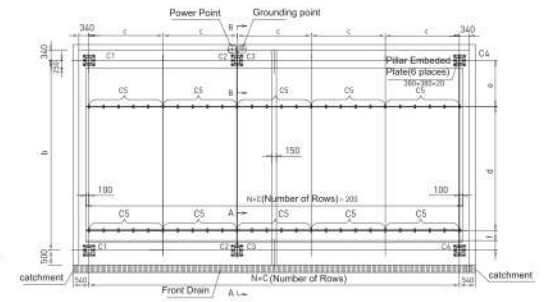
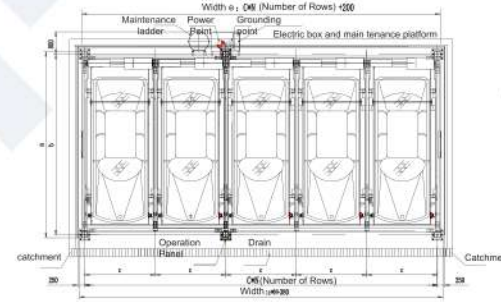
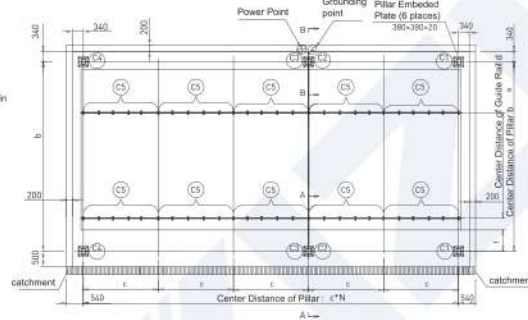


Plan View

Architectural drawings

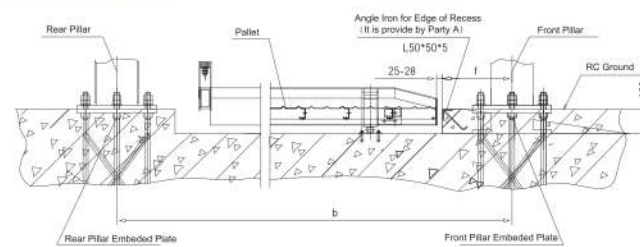
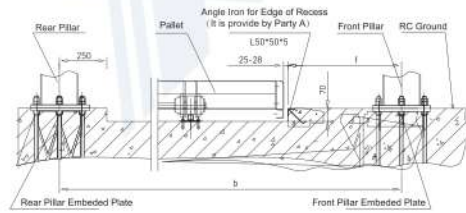
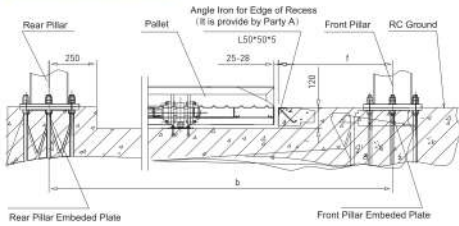
Plan View

Architectural drawings



Component Diagram

Component Diagram



Technical parameters



Type	Size	A	B	C	D	E	F
PSH2.*Z-XI		5350	5125	2300	3400	1022	330
PSH2.*D-XI		5650	5425	2350	3400	1172	480
PSH2.*T2-XI		5850	5625	2400	3400	1272	580
PSH2.*T-XI		5950	5725	2400	3400	1322	630
PSH3.*Z-XI		6015	5695	2300	3400	1422	530
PSH3.*D-XI		6315	5995	2350	3400	1572	680
PSH3.*T2-XI		6515	6195	2400	3400	1672	780
PSH3.*T-XI		6615	6295	2400	3400	1722	830
PSH2.*Z-DI-XI		5500	5200	2300			
PSH2.*D-DI-XI		5800	5500	2350			
PSH2.*T2-DI-XI		6000	5700	2400			
PSH2.*T-DI-XI		6100	5800	2400			
PSH3.*Z-DI-XI		5500	5225	2300			
PSH3.*D-DI-XI		5800	5525	2350			
PSH3.*T2-DI-XI		6000	5725	2400			
PSH3.*T-DI-XI		6100	5825	2400			

Type	Size	A	B	C	D	E
PSH4.*Z-D1-XI		6015	5695	2400	4900	3000
PSH4.*D-D1-XI		6315	5995	2450	5200	3000
PSH4.*T2-D1-XI		6515	6195	2500	5400	3200
PSH4.*T-D1-XI		6615	6295	2500	5500	3200
PSH4.*Z-D2-XI		5850	5650	2450	4900	3000
PSH4.*D-D2-XI		6150	5950	2500	5200	3000
PSH4.*T2-D2-XI		6350	6150	2550	5400	3200
PSH4.*T-D2-XI		6450	6250	2550	5500	3200
PSH6.*Z-XI		6550	5950	2400	3700	
PSH6.*D-XI		6850	6250	2550	4000	
PSH6.*T2-XI		7050	6450	2600	4200	
PSH6.*T-XI		7550	6550	2600	4300	

Project	Type	PSH2.*Z-XI	PSH2.*D-XI	PSH2.*T2-XI	PSH2.*T-XI	PSH2.*Z-DI-XI	PSH2.*D-DI-XI	PSH2.*T2-DI-XI	
		PSH3.*Z-XI	PSH3.*D-XI	PSH3.*T2-XI	PSH3.*T-XI	PSH3.*Z-DI-XI	PSH3.*D-DI-XI	PSH3.*T2-DI-XI	
Length		4700mm	5000mm	5200mm	5300mm	4700mm	5000mm	5200mm	5300mm
Width		1800mm	1850mm	1900mm	1900mm	1800mm	1850mm	1900mm	1900mm
With side mirror		1900mm	1950mm	2000mm	2000mm	1900mm	1950mm	2000mm	2000mm
Tyre to tyre		1760mm	1800mm	1860mm	1860mm	1760mm	1800mm	1860mm	1860mm
Height		1550mm	1550mm	1550mm	1550mm	1550mm	1550mm	1550mm	1550mm
Weight		1500kg	1700kg	2000kg	2350kg	1500kg	1700kg	2000kg	2350kg

Project	Type	PSH4.*Z-D1-XI	PSH4.*D-D1-XI	PSH4.*T2-D1-XI	PSH4.*T-D1-XI
		PSH4.*Z-D2-XI	PSH4.*D-D2-XI	PSH4.*T2-D2-XI	PSH4.*T-D2-XI
Length		4700mm	5000mm	5200mm	5300mm
Width		1800mm	1850mm	1900mm	1900mm
With side mirror		1900mm	1950mm	2000mm	2000mm
Tyre to tyre		1760mm	1800mm	1860mm	1860mm
Height		1550mm	1550mm	1550mm	1550mm
Weight		1500kg	1700kg	2000kg	2350kg

Project	Type	PSH2.*-XI	PSH3.*-XI	PSH2.*-D1-XI	PSH3.*-D1-XI
Total Width		C×N(Number of Rows)+150 C×N(number of columns)+150	C×N(Number of Rows)+200 C×N(number of columns)+520	C×N(Number of Rows)+300	
Park capacity		N×2-1	N×3-2	N×2 (Number of Rows) - 1	N×3 (Number of Rows) - 1
Lift speed/Slide speed		4.0~5.0m/min/6.0~8.0m/min		4.0~5.0m/min/6.0~8.0m/min	
Lift reducer/slide reducer		2.2kw/0.2kw		2.2kw/0.2kw	
Power/Power capacity		380V50Hz/4KVA		380V50Hz/4KVA	
Drive mode		motor-chain type		motor-chain type	
Operation method		Button/IC card (For choose)		Button/IC card (For choose)	

Project	Type	PSH4.*-D1-XI	PSH4.*-D2-XI	PSH6.*-XI
Total Width		C×(N-2)+D×2+300	C×N+210	C×N+600
Park capacity		N×4-2	N×4-2	N×6-5
Lift speed/Slide speed		4.0-5.0m/min/6.0-8.0m/min		4.0-5.0m/min/6.0-8.0m/min
Lift speed/with pit		With one layer pit3.0-4.0m/min/With two layer pit2.0-3.0m/min		
Lift reducer/slide reducer		2.2kw/pit3.7kw/0.2kw		2.2kw/0.2kw
Power/Power capacity		380V50Hz/4KVA		380V50Hz/4KVA
Drive mode		motor-chain type		motor-chain type
Operation method		Button/IC card (For choose)		Button/IC card (For choose)